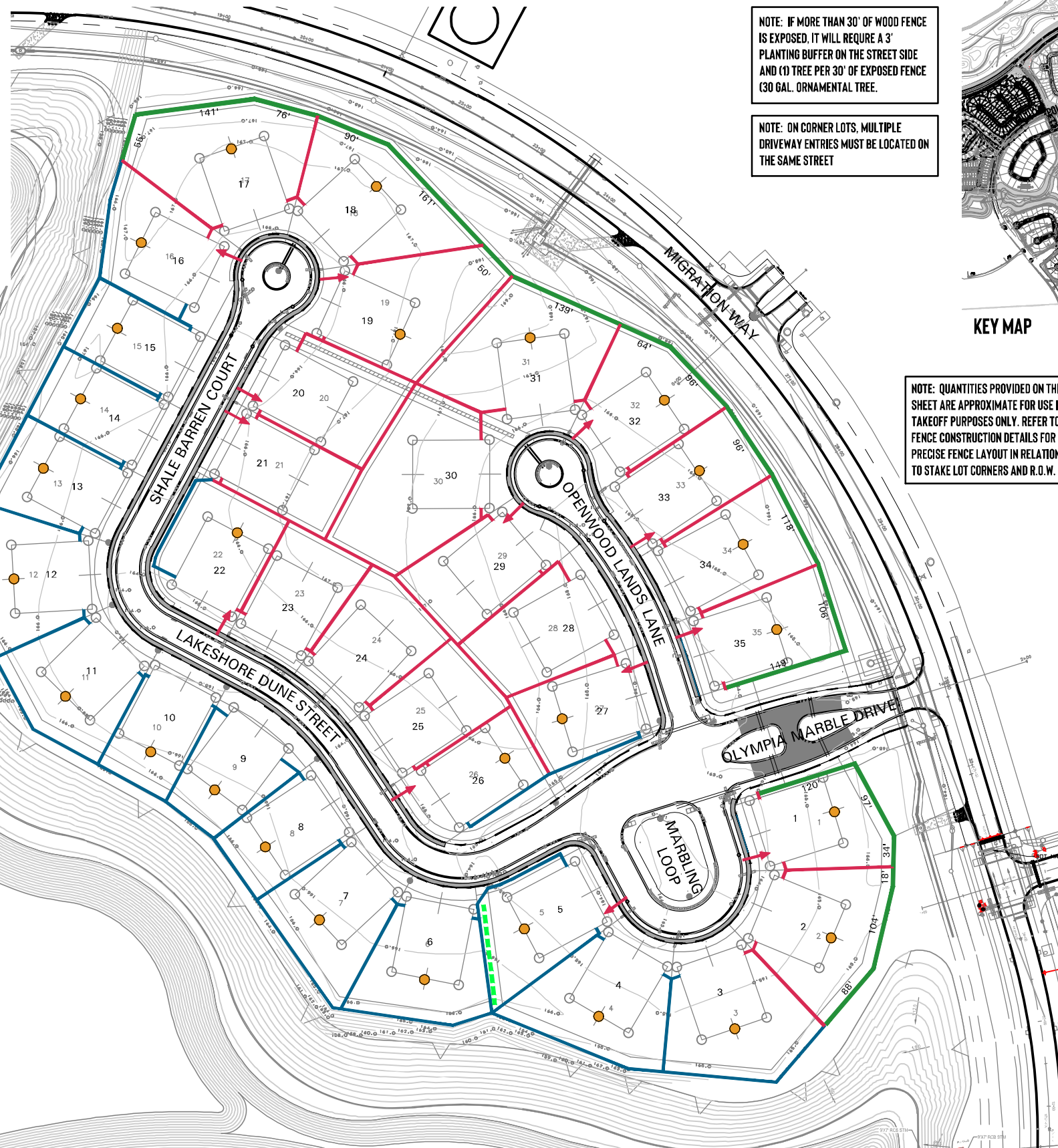


**SINGLE WYTHE BRICK FENCE ENLARGED DIAGRAM**



NOTE: IF MORE THAN 30' OF WOOD FENCE IS EXPOSED, IT WILL REQUIRE A 3' PLANTING BUFFER ON THE STREET SIDE AND (1) TREE PER 30' OF EXPOSED FENCE (30 GAL. ORNAMENTAL TREE).

NOTE: ON CORNER LOTS, MULTIPLE DRIVEWAY ENTRIES MUST BE LOCATED ON THE SAME STREET

NOTE: QUANTITIES PROVIDED ON THIS SHEET ARE APPROXIMATE FOR USE IN TAKEOFF PURPOSES ONLY. REFER TO FENCE CONSTRUCTION DETAILS FOR PRECISE FENCE LAYOUT IN RELATION TO STAKE LOT CORNERS AND R.O.W.



DRIVEWAY LOCATION VERIFIED BY ENGINEER

- PRELIMINARY PLAT
- FINAL PLAT
- RECORDED PLAT

**FENCING LEGEND**

- 6 FT. HIGH SINGLE WYTHE BRICK BY DEVELOPER
- 8 FT. HIGH SINGLE WYTHE BRICK BY DEVELOPER
- 5 FT. HIGH TUBE STEEL BY BUILDER
- 6 FT. HIGH DOUBLE-SIDED WOOD BY BUILDER
- 45° CORNER CLIP FENCE, 10'X10', TYP., REF. DESIGN GUIDELINE EXHIBIT D7, "CORNER LOT FENCE REQUIREMENT - OPEN TUBE STEEL"
- DRIVEWAY LOCATION
- MASONRY REQUIRED ON SECOND STORY; REFERENCE RESIDENTIAL DEVELOPMENT STANDARDS
- - - 3 FT. WIDE EVERGREEN SHRUB PLANTING BUFFER, REF. RESIDENTIAL DEVELOPMENT STANDARDS FOR SPECIES SELECTION
- 5 FT. WIDE BUILDER SIDEWALK
- - - RIGHT OF WAY

